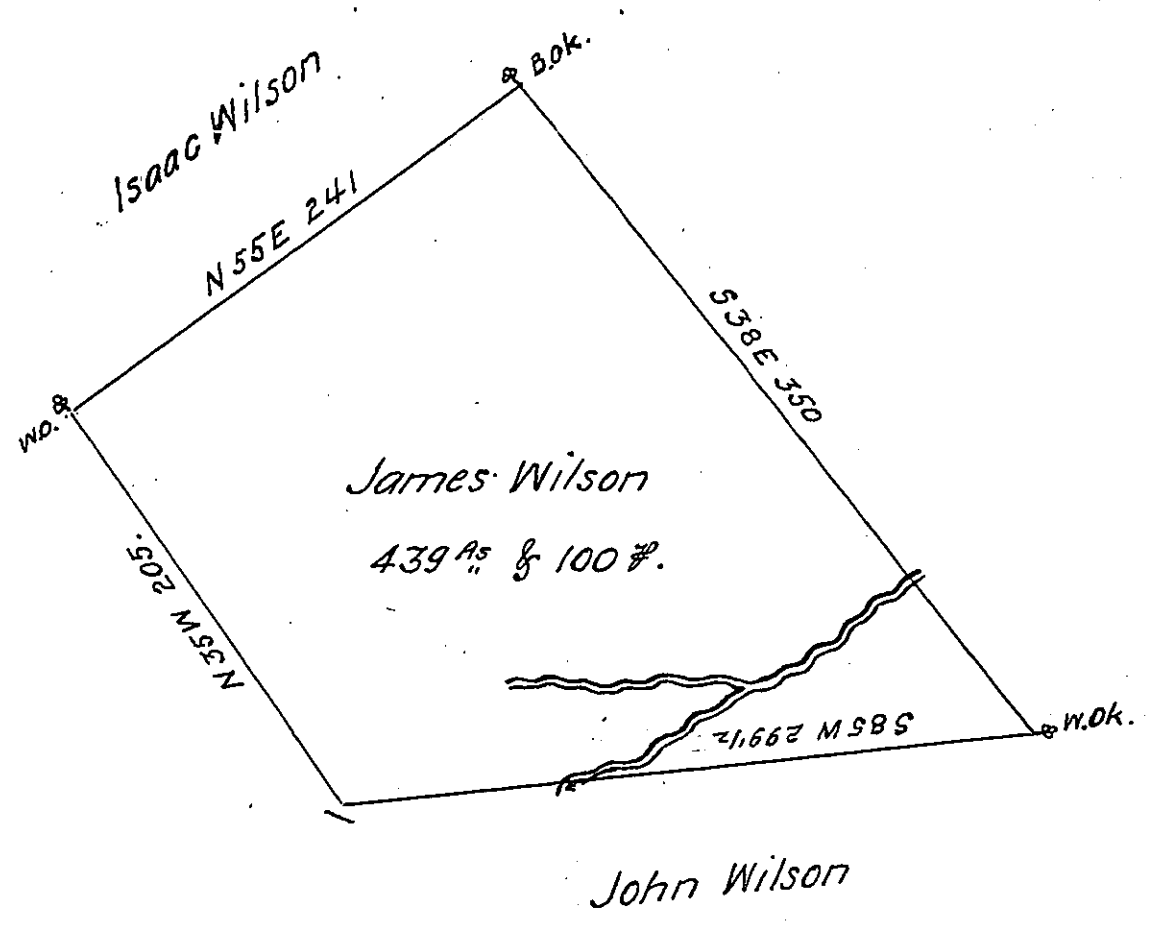


FORM No. 1.



*Draught of a Tract of Land Situate on a Branch leading into Clear field
Creek in the County of Bedford Containing four hundred and thirty nine Acres
and One hundred perches and the Usual Allowance of Six 7/8 Cent for Roads
&c. Surveyed for James Wilson June 3^d 1785. In pursuance of a Warrant
Dated July 1st 1784.*

To John Lukens Esq. S.G.

George Woods D.S.

*IN TESTIMONY that the above is a copy of the original remaining on file in
the Department of Internal Affairs of Pennsylvania, made
comformably to an Act of Assembly approved the 16th day of
February 1833, I have hereunto set my hand and caused
the Seal of said Department to be affixed at Harrisburg,
this thirteenth day of May 1907*

Acary Howard
Secretary of Internal Affairs.